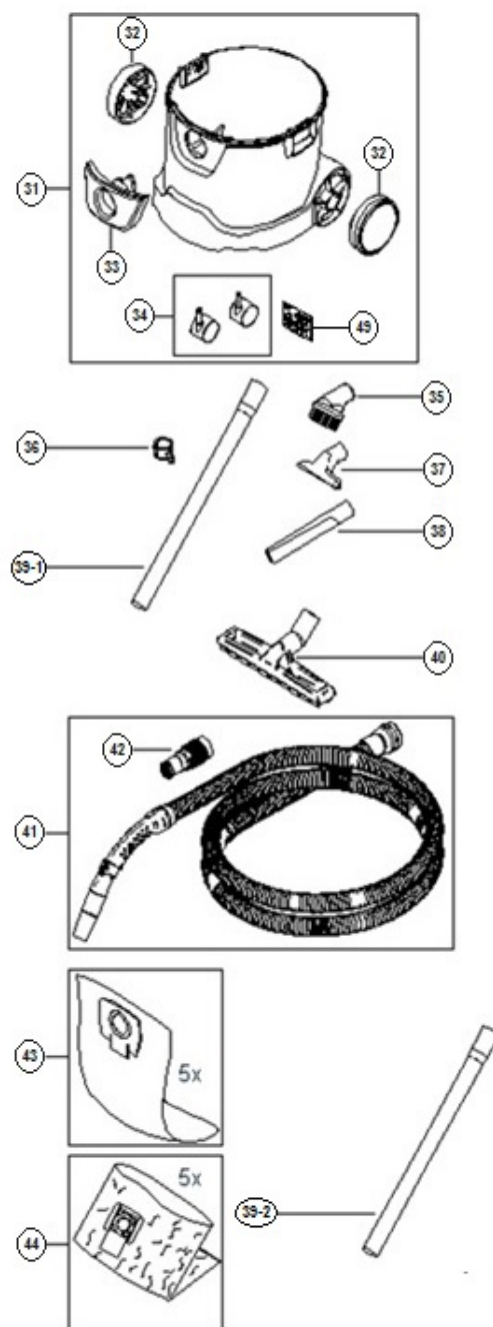
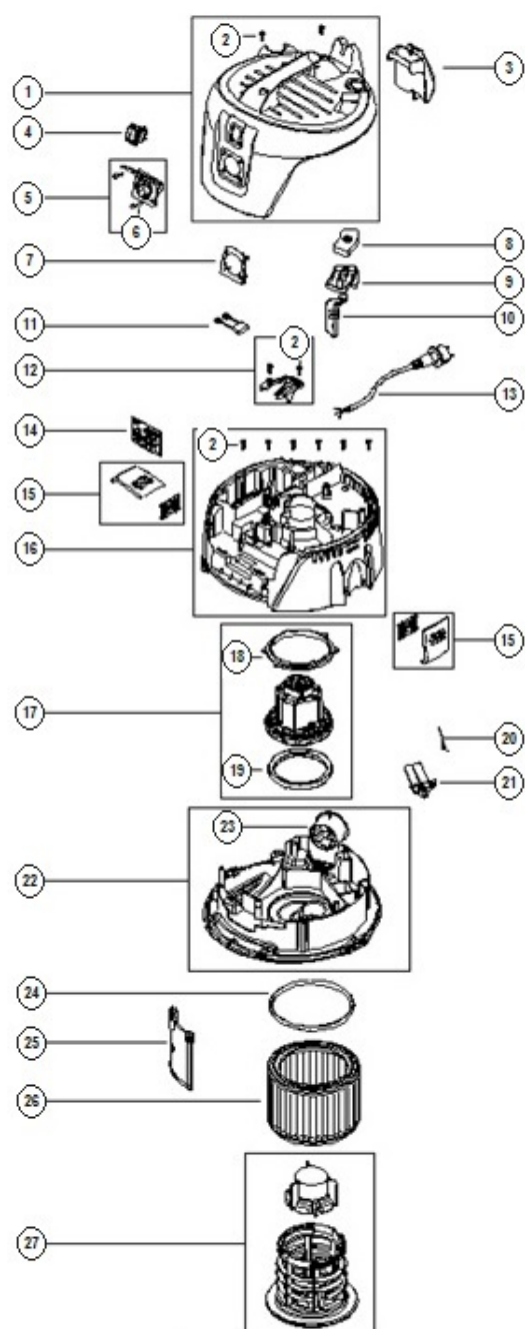


## ELECTRIC TOOLS PART LIST

**DUST EXTRACTOR**  
**Model RP250YDL**

2017.15.11



ITEM NO.	CODE NO.	DESCRIPTION	NO.USED	REMARKS
1	372127	HEAD COVER	1	INCLUD. 2
2	372128	SCREW EJOT DELTA PT50X18WN1451	10	
3	372129	HOSE/CABLE HOOK	1	
4	372130	SWITCH 1-0-TOOL	1	
5	372131	SOCKET 16A/250V EU	1	
6	372132	SCREW EJOT DELTA PT35X18WN5451	1	
7	372133	PLUG SOCKET PLATE	1	
8	372134	PC-BUTTON	1	
9	372135	PC DRAIN HOUSING	1	
10	372136	PC ROD BASIC	1	
11	372137	ANTI-INTERFERENCE CAPACITOR SET	1	
12	372138	CABLE OUTLET	1	INCLUD. 2
13	372139	POWER CORD H05RR-F 3G1.5X8X2	1	
14	372140	PCBA CHAMELEON 21 EA 230V	1	
15	372141	CLAMP	2	
16	372142	CLAMPING PLATE	1	INCLUD. 2
17	372143	MOTOR KIT 1000W 220-240V/50-60HZ	1	INCLUD. 18,19
18	372144	UPPER MOTOR SEALING	1	
19	372145	LOWER MOTOR SEALING	1	
20	372146	TORSION SPRING D0.9X18X45 INOX	1	
21	372147	PC FLAP-KIT	1	
22	372148	BASEPLATE WITH OUTLET	1	INCLUD. 23
23	372149	OUTLET	1	
24	372150	SEALING FILTER	1	
25	372151	DEFLECTOR SHIELD	1	
26	372152	FILTER ELEMENT D185X140	1	
27	372153	FILTER SUPPORT CASE	1	
31	372155	RP250YDL CONTAINER 25L ASS'Y	1	INCLUD. 32-34,49
32	372159	WHEEL D130	2	
33	372157	INLET FITTING	1	
34	372160	WHEELS LINK 50MM	1	
35	372162	SUCTION BRUSH D36 BLACK	1	
36	372163	TUBE HOLDER KIT D36	1	
37	372164	UNIVERSAL NOZZLE D36X115	1	
38	372161	CREVICE NOZZLE D36X200	1	
39-1	372165	EXTEN TUBE D35 2X505MM ST/CR	1	
39-2	372166	EXTEN TUBE D36 2X500MM	1	
40	372167	FLOOR NOZZLE D36 W/D KIT	1	
41	372168	SUCTION HOSE SET D32X3500MM	1	INCLUD. 42
42	372170	TOOL ADAPTER	1	
43	372171	FILTER BAG HITACHI – SET 5	1	
44	372172	DISPOSAL BAG HITACHI – SET 5	1	
49	372877	LABEL DUST CLASS L	1	